

2021-2022 Ducati Monster/Monster+ 937 Fender Eliminator Kit

Part No. FE-D21MST-937

Parts List

x1 Plate Holder	x4 M6 lock nuts
x1 LED license plate light	x4 M6 washers
x1 License plate light adapter harness	x4 M6 large OD washers
x4 M6x12mm bolts	x2 Aftermarket signal adapter bracket (in-hole)
x4 M6x16mm bolts	x1 Factory signal adapter brackets (L+R)

1. Remove plastic fender cover/under panel (4 bolts from underneath and carefully drop down)
2. Remove rear fender (4 bolts from underneath, support fender on last bolt) and drop down, then unplug the left/right signals and license plate light plugs
3. Mount the LED license plate light to the plate holder by feeding the wire through the center hole and securing with the 2 nuts. Attached the license plate light adapter harness yellow>white and blue>black

Optional: Install turn signals - see below

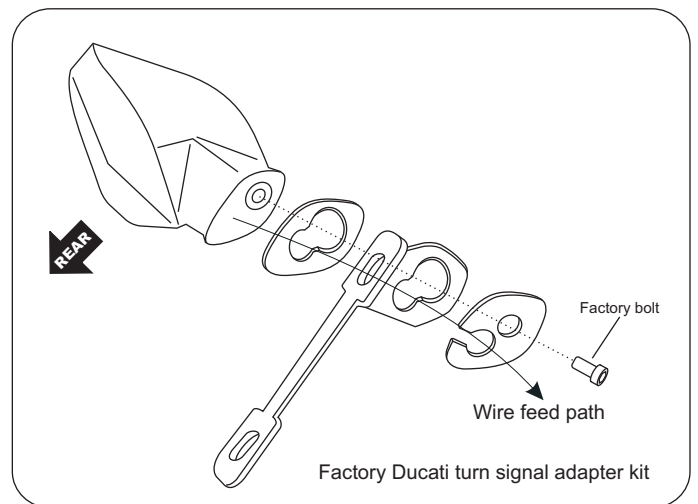
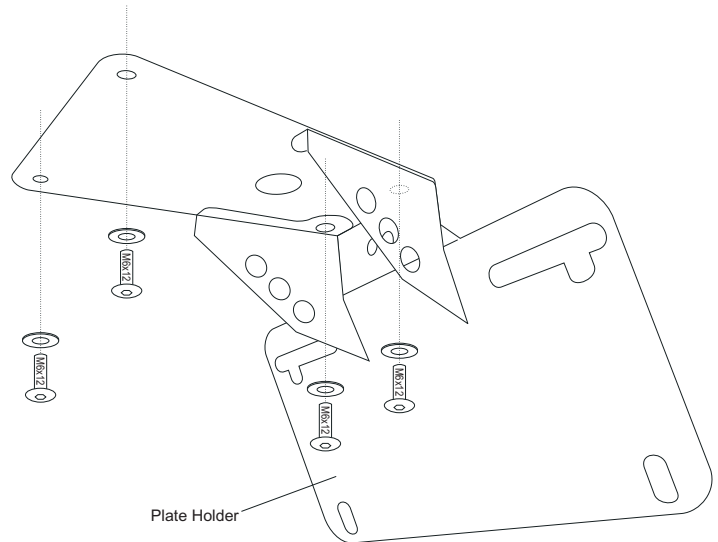
4. For wire management there are 2 ways to organize the wires 1) leave the 3 wires (left/right signals and license plate light plugs) the way they currently stand, this is ideal for external turn signals or 2) remove the rubber grommet and route the 3 wires back up into the tail area, this would be ideal for connecting an integrated tail light. For the purpose of this installation we will be leaving them the way they are so we can run the factory turn signals. See below for supplemental installation for routing wires up into tail area.
5. Grab the 3 wire harnesses protruding from the bikes under tail and feed them through the top round hole on the plate holder, then mount using four M6x12mm bolts and M6 washers. Apply a drop of Loctite Blue or non-permanent thread locker on these bolts.
6. Plug in the left/right turn signals and license plate light, then organize the excess wires in preparation to reinstall the plastic fender cover under panel
7. Reinstall the plastic fender cover under panel

Installing with Factory Turn Signals (Ducati clamp around signals)

1. Grab the factory fender and prepare for disassembly. From underneath, remove the 4 screws holding together the upper and lower number plate holder panels, this will releasing the left and right turn signals. Undo the 2 wire management clips to fully remove the signals.
2. Remove the rubber neck off the turn signal (1 bolt from inside) - retain bolt for reinstalling
3. Install the turn signals onto the appropriate factory turn signal bracket from this kit using the supplied spacers and secure with bolt removed from step 2 above. See illustration for correct order
4. Mount the turn signal assembly from step 3 above behind the plate holder while installing the license plate using four M6x16mm bolts, M6 large OD washers and M6 lock nuts (Bolt>License Plate>Plate Holder>Signal Bracket>Washer>Nut)

Installing aftermarket in-hole turn signals

1. Mount the aftermarket signal onto the aftermarket turn signal brackets, do not fully tighten
2. Mount the adapter on the upper holes of the license plate using two M6x16mm bolts, M6 larger OD washers and M6 lock nuts
3. Clock the turn signal so that it faces the rear, then tighten
4. Aftermarket turn signals will require additional wiring



Supplemental installation for routing wires up through tail area

1. Remove rider seat (key)
2. Remove passenger seat/pillion (1 bolt)
3. Remove the 1 screw that secures the fuse/relay carrier above the trunk area so that it pulls up slightly and provides some slack to push through the grommet and 3 wires harnesses. Remove the grommet it will no longer be used
4. Installation of the plate holder is going to require feeding the wires up through the plate holder central upper hole and feeding the license plate harness up through the under tail hole into the tail area, then plugging it back in.