

Ducati Monster 696 Fender Eliminator Kit

[Version 1.2]

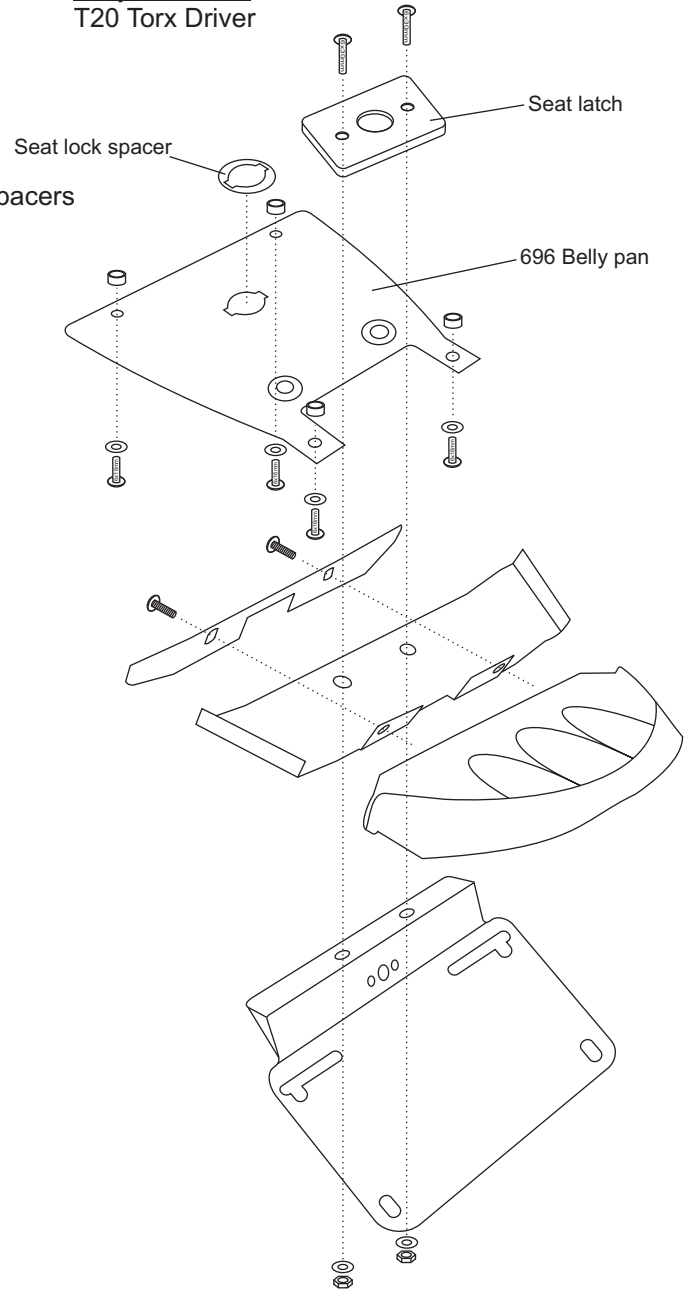
(with factory exhaust servo present)

Parts List

x1 Belly pan [696]	x1 License plate harness (spade)
x1 Backing plate	x4 Plastic spacers (clear)
x1 Tail light mount	x2 6x30mm allen bolts
x1 Seat lock spacer	x4 6x12mm allen bolts
x6 6mm nylon nuts	x4 6x16mm allen bolts
x1 License plate holder	x10 Washers
x1 License plate LED light	x2 Factory turn signal brackets + spacers
	x2 Aftermarket turn signal brackets

Required Tool

T20 Torx Driver



1. Remove seat
2. Unbolt fender (4 allen bolts from top/bottom) and unplug wire next to subframe
3. Remove cover from back of fender (3 allen bolts) and disconnect seat latch and license plate light connectors
4. Remove turn signals and tail light from rear fender. T20 torx driver needed to remove tail light
5. Remove lock from stock fender. Note: you may have to tap nut with screw driver if no access for wrench
6. Exchange seat latch bolts for longer 6x30mm allen bolts supplied in kit (do this one bolt at a time to keep it aligned)
7. Mount tail light to tail light mount and backing plate using factory T20 torx screws
8. Mount license plate LED light to license plate holder and run the wires through the back. Attach harness adapter and connect
9. Mount the lock on the belly pan using the supplied lock spacer and original nut. Note: Lock spacer goes between belly pan and cable bracket
10. Mount the belly pan using 4 6x16mm allen bolts with washers and clear plastic spacers, then connect the seat latch cable. Note: Clear spacers go above the belly pan
11. Place lip of license plate holder beneath belly pan and secure to seat latch bolts (from step 6) and secure with 2 6mm nuts. Note: tail light wire harness and license plate wires must be connected at this time
12. Mount license plate with 4 6x12mm allen bolts and nuts
13. Optional: Mount the OEM or aftermarket turn signal adapters to the license plate mounting holes on the plate holder using two/four 6x12mm allen bolts, washers, and nuts. Install the OEM or aftermarket turn signals onto the adapter and route wires through center hole and plug into appropriate plug removed from step 2. Aftermarket signals may require wiring. For OEM signals separate signal mounts in half and remove signal wires hidden inside. Refer to illustration on right to mount factory signals. SX=Left, DX=Right

14. Replace seat
15. Check all lighting

Run tail light wires through this opening

