

2017-2019, 2020-2022 Kawasaki Z900 Fender Eliminator Kit

Parts List

x1 License plate holder	x8 M6 nylon lock nuts
x1 License plate LED light	x4 M6 washers
x1 License plate harness adapter	x4 M6 large OD washers
x4 M6x20mm bolts	x2 Factory signal adapters (For USA/Similar models)
x4 M6x16mm bolts	x2 Aftermarket signal adapters

1. Remove passenger seat. Reach in trunk and pull back the silver 'U' handle to release driver seat, pull driver seat upwards

2. Remove the plastic upper tail section (4 bolts at the rear and 2 screws up front) and carefully slide up and rearwards to release from locking tabs

3. Locate the black plastic boot on the right side of the bike and slide it back, unplug the left/right turn signals (black and gray plugs) and the license plate light (black plug)

4. Remove the rear fender (1 screw and 4 bolts from top) before removing the last bolt support the fender so it does not drop down, carefully drop fender down and pull out the 3 wires with it.

5. Attach LED license plate light to the plate holder running the wire through the center hole. Connect the license plate light adapter harness to the LED light in the following configuration:

2017-2019 models: white>white and black>black

2020+ models: white>black and black>white

Optional: Mount turn signals see below

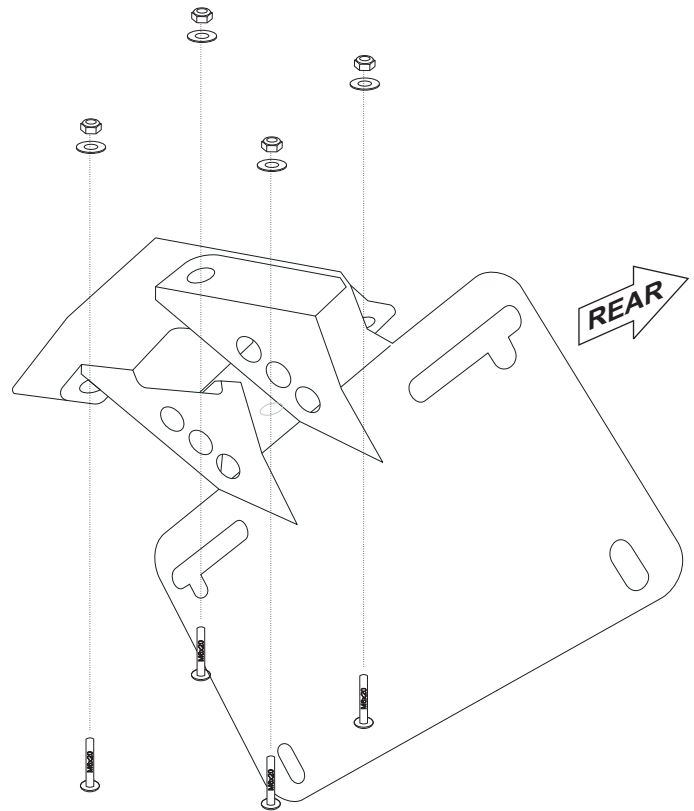
6. Feed the wires back up through the side of the under tail and mount the plate holder using 4 M6x20mm bolts, washers and lock nuts. See illustration

7. Plug in the license plate light (and optional turn signals)

8. Reinstall the plastic upper tail section and reinstall seat

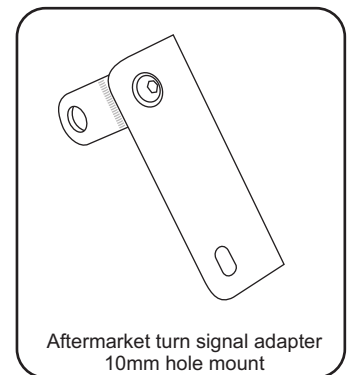
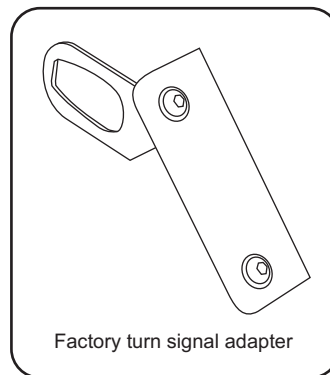
9. Mount the license plate using the 4 M6x16mm bolts, large OD washers and lock nuts

10. Check all lights for functionality before going on a road test



Mounting factory turn signals:

1. Separate the fender in half (1 nut to remove the rear facing reflector and 2 screws from the side)
2. Remove the turn signal from the fender (1 screw in the center, 1 lock spacer, and 1 metal insert) grab turn signal and pull forward against the fender to pop it out.
3. Mount the turn signals on the factory turn signal adapters in the same way removed from the factory fender.
4. Mount the signal adapters to the back of the plate holder using the same 4 bolts to mount the license plate. Installing with aftermarket 10mm hole mount turn signals



Mounting aftermarket turn signals:

1. Mount the 2 aftermarket turn signal adapters to the fender eliminator assembly plate mount upper hole.
2. Mount the aftermarket 10mm hole mount turn signals.
3. Run the wires through the square hole and wire it to the bike.